



WAY IN NETWORK
慧賢會

27th Anniversary Charity Gala Ball

Paths of Enlightenment

27週年慈善餐舞會



Way In Network 27th Anniversary Souvenir Publication
www.wayinnetwork.org.au

27

Saturday, 2nd March 2019
Hilton Sydney Grand Ballroom

Theme

Paths of Enlightenment

Fundraising For



Diamond Sponsor



Experience the world of Westpac Private Bank

With a thriving network of experts and innovators, being a client of Westpac Private Bank opens the door to many opportunities.

Our carefully crafted events provide our clients with epic experiences beyond private banking.

We are one of Australia's most awarded Private Banks and the trusted financial partner of high net worth individuals.

Our truly personal service can take care of all aspects of your and your family's financial affairs, creating enduring relationships across generations.

When you become a Westpac Private Bank client you join an exclusive network.

To find out more about how Westpac Private Bank can help grow and protect your wealth, contact Pierre Leung, Associate Director of Asian Business, on 0403 971 892 or email pierreleung@westpac.com.au

梁震熙 亞洲業務副總裁

westpac.com.au/private



Westpac Private Bank is a division of the Westpac Banking Corporation ABN 33 007 457 141 AFSL and Australian credit licence 233714. This is a summary only and should not be considered a comprehensive statement on any matter or relied upon as such.

MESSAGE FROM PRESIDENT



Annie Tang JP



It is with great honour to welcome you all to join us tonight at the Way In Network 27th Anniversary Charity Gala Ball "Paths of Enlightenment" in celebration of 2019 International Women Day.

Way In Network was incorporated in 1992 as a community non-profit organisation, founded by a group of visionary women with a migrant background. It has been a network which has provided invaluable support for migrate women to develop self-esteem and confidence to undertake the challenges of integrating into the Australian mainstream society.

For the last 27 years, the membership has grown from a modest handful of inspirational and committed women to a group of compassionate women from all ages who bring with them a variety experiences, interests, skills, and talents to continue our charity mission.

As a Women's Association we have in the past placed many of our resources and charity proceeds to support the women sector, such as being the ethic ambassador to Australian Gynaecological Cancer Foundation (AGCF). This year our committee has decided to broaden our scope of service to children and the youths for their education. It has always been an area which we have focused on in the past.

The theme of our 2019 Charity Ball is to open "Paths of Enlightenment" to the children and youths in need, and to equip them for a better future. We are delighted to contribute to 2 worthy causes namely - Royal Institute for Deaf and Blind Children (RIDBC) as well as an internship program by Westmead Women's Institute for Research & Data Collaboration (W2RIED) to World Health Organisation (WHO) in Geneva.

Way In Network shares the common goal with RIDBC of helping disadvantaged children by encouraging a love of learning. At the same time, Way In Network is delighted to be the first Australian Chinese Association to fund the internship program to World Health Organisation (WHO). The 3 years Bursary program will enable young Australian medical practitioners to be exposed to a high standard of medical research with global perspective for future medical career prospects. The whole initiative would not succeed without the initiation from the Australian Chinese Medical Association (ACMA) and the facilitation of W2RIED on the professional screening of candidates.

We are so grateful to the generous support from all the sponsors who believe in our mission and their ongoing commitment to join arms with us and serve the community, which we are all a part of.

I am also thankful for the many volunteers and the Way In ladies, with our united team work, we will be able to contribute to make a difference, our future in a tangible and constructive way.

May I extend my gratitude to you again and wish you all a very enjoyable evening!

A handwritten signature in black ink, appearing to read "Annie Tang".

Annie Tang JP
President of Way In Network



David Coleman MP

MINISTER FOR IMMIGRATION,
CITIZENSHIP AND MULTICULTURAL AFFAIRS

WAY IN NETWORK 27th ANNIVERSARY CHARITY GALA BALL

It is with great pleasure that I send my warmest greetings to members of Way In Network and everyone attending the 27th Anniversary Charity Gala Ball.

The Way In Network was established in 1992 to create a support network for migrant women during their settlement in Australia. Since then, members have exemplified a commitment to making the lives of others better.

I would like to praise the excellent work of members for their fundraising efforts for causes that support those in need, both within the local community and internationally.

The strong sense of community spirit demonstrated by the members of Way In Network reflects the continued dedication of the Chinese Australian community to our nation.

Australia is the most successful migrant nation in the world and the Chinese Australian community has provided a significant contribution to our nation socially, culturally and economically.

I wish you every success for tonight's fundraising activities for the Royal Institute for Deaf and Blind Children and a World Health Organisation Internship.

Have a most enjoyable evening.

David Coleman



Gladys Berejiklian MP
Premier of New South Wales

Way In Network Charity Gala Ball

I am delighted to offer my best wishes to members of the Way In Network as you celebrate International Women's Day with your annual charity ball.

I know the Network has worked hard over the years to raise more than \$3.5 million to aid victims of natural disasters and to promote women's health in the community.

The partnership with the Australian Gynaecological Cancer Foundation is a great example of community-led projects, helping to find new ways to combat cancer.

Under the leadership of President Annie Tang JP, the Way In Network has broadened its reach to help new migrants settle successfully in our wonderful State.

As Premier, I am proud of our harmonious multicultural society and thank members of the Way In Network, both past and present, for their contribution to the community.

I wish you all the best for your Charity Gala Ball.

Gladys Berejiklian MP
Premier

MESSAGE

Michael Daley MP
Leader of the Opposition



WAY IN NETWORK 27TH ANNIVERSARY CHARITY GALA BALL

I am delighted to send my best wishes to the Way in Network on the occasion of their 27th Anniversary Charity Gala Ball.

I applaud their initiative in organising this function and particularly want to commend their choice of charities to support. The Royal Institute for Deaf and Blind Children and the World Health Organisation Internship are both worthy causes and your work tonight will help fund crucial healthcare for women and children both in Australia and around the world.

The Way in Network has worked tirelessly to cultivate self confidence among migrants, build connections between communities and support community activities and services for nearly three decades. This work has helped to make our multicultural state more harmonious and prosperous and for that I thank you.

On behalf of NSW Labor I wish all attendees every success for tonight's event and for the future of your organisation.

Yours sincerely

A handwritten signature in blue ink that reads "Michael Daley".

Michael Daley
NSW Opposition Leader

MESSAGE FROM DIRECTOR OF HKETO



RAYMOND FAN
DIRECTOR

On behalf of the Hong Kong Economic and Trade Office, it gives me great pleasure to extend our congratulations to Way In Network on its 27th anniversary.

Over the past years, the Way In Network has dedicated to building a support network for migrant women during their settlement in Australia. It has raised over \$3.5 million to support local community and for international disaster relief. Its outstanding community services are highly commendable in Australia and across the world.

I wish the Way in Network every success in its work and a gainful year ahead.

Yours sincerely,

Raymond Fan
Director (Representative to Australia and New Zealand)
Hong Kong Economic and Trade Office, Government of the HKSAR

Message from W2IRED Chair: Dr Seng Chua

On behalf of Westmead Women Institute of Research and data collaboration (W²IRED), I would like to express my sincere thanks to WayIn Network for your charity and vision. Since its inception twenty seven years ago, WayIn Network has proven itself a dynamic organisation who is well trusted in the community. This can be seen by its ongoing success in raising needed funds to those organisations in need. This year charitable function has again cemented WayIn Network consistent effort in helping those in need: Children and Women.

With the charismatic leadership of President Annie Tang and her team, WayIn Network has committed this year's fund raising to The Royal Institute for Deaf and Blind Children and providing scholarship for medical trainees and doctor to be trained with World Health Organisation (WHO). It is to this second "national and international" goal that I will expand on.

Each year, 300,000 women died through pregnancy and childbirth in the world. Putting this in perspective, this figure is roughly the number of women who give birth annually in Australia. We are a fortunate country with world class health care system. Many pregnant women in developing countries face high risk of being gravely ill and loss their lives from childbirth, with poor access to health care. Many countries in the world depend on resources from charitable organisations, NGOs for much needed health expertise and financial aid. WHO is leading the charge in this front.

Each year, the women and Children Health section of WHO is providing training for doctors interested in furthering their career in women and children health in the developing world. These eligible trainees will spend a minimum of two months in Geneva working as volunteers, developing health policies and projects for developing countries in need.

W2IRED has played the role of selecting eligible candidates from Australian universities and hospitals to be trained with WHO. WayIn's commitment in providing for this scholarship will allow eligible volunteers to fully focus on their endeavour. This scholarship will be available for a total of 3 years.

There has been an overwhelming number of applicants for this year's application. Out of a total of 48 eligible applicants, two were selected for the 2019 WayIn Scholarship. Meliseini Tai-Roche and Anne O'Connor. They will work under the supervision of renounce WHO Obstetrician and public health expert, Dr Maurice Bucagu.

Both Meleseine and Anne were very thankful for the scholarship they received. Meleseine has just finished her medical degree. She has been a clinical Midwifery consultant for more than 10 years, working in the remote Kimberley region in Western Australia. She was called to present in The Australian Parliament, House of Representatives Standing Committee on Aboriginal and Torres Strait Islander Affairs on two separate occasions. Anne is finishing her Obstetrics and Gynaecological training. She is planning to further her career in doing PhD in public health policy. This training with WHO will give her the necessary experience and training in this aspect of her training.

Once again a big thank you for your support. I am very certain this scholarship will in turn benefit countless of women in newborn in many countries.

MESSAGE FROM ROYAL INSTITUTE FOR DEAF & BLIND CHILDREN



CHRIS REHN
CHIEF EXECUTIVE

Royal Institute for Deaf and Blind Children (RIDBC) is Australia's largest non-government provider of education, therapy, cochlear implant and diagnostic services for children and adults with vision and/or hearing loss, their families, and the professionals who support them.

At RIDBC we rely heavily on the generosity of the community to support us in our goal; that no person with vision or hearing loss gets left behind.

We are honoured to have the continued and ongoing support of the Way In Network, and to be the beneficiary charity for the 2019 Way In Network Charity Ball, supporting our Alternative Format Printing (AFP) Service for people with low vision or blindness.

Over the years, RIDBC has provided a range of education and support services to children with vision and hearing impairment, reflecting changes in philosophy of education for children with disabilities.

RIDBC's Alternative Format Publications service (AFP) assists people who need to access printed materials in their choice of alternative format. RIDBC pioneered the production of computerised braille in Australia and has over 30 years of expertise and knowledge in alternative format publications.

AFP provides educational support through large format print, braille and tactile books, exam papers, textbooks, as well as providing standardised assessments for all clients. AFP's Early Learning Support includes books for pre-school literacy in braille, large print and dual media (large print and braille with tactiles). AFP also provides tertiary material support for university students. RIDBC is passionate about ensuring that all children and young adults have equal access to education, and our AFP service ensures that vision impaired and blind children can reach their potential alongside their sighted peers.

On behalf of our students, clients and staff, I would like to express my sincere gratitude to the Way In Network, members, the organising committee, and honoured guests. Your support is helping to change the lives of the children and young adults that we serve, ensuring that the sky is their only limit.

A handwritten signature in black ink, appearing to read 'CR' or 'Chris Rehn' in a stylized, cursive script.

Mr Chris Rehn
Chief Executive

MESSAGE FROM FOUNDER, HONORARY PRESIDENT



Hon Dr Helen Sham-Ho OAM JP

It gives me the greatest pleasure to convey my warmest congratulations to Way In Network for all their fundraiser events. With no exception, I know in this upcoming 27th Anniversary Charity Gala Ball at the Sydney Hilton, under the leadership of current President, Annie Tang JP, will present the most professional, spirited and impressive fundraising function.

For the past 26 years, the sisters of Way In Network with the diligence and the experiences of past presidents like Florence Chau JP, Linda Tang JP and Elsa Shum have raised over \$3.5 million for various charitable and worthwhile causes in numerous fields in Australia and internationally like China and Vanuatu etc. It will be a remiss not to mention the most welcome annual event by the local elderlies; it is the Way In annual signature luncheon attended by more than 300 seniors of our community.

To recognise the tireless work and the dedication of Way In ladies, the NSW Government has twice in 2002 and 2013 bestowed Charity Awards to acknowledge Way In Network. Indeed, Way In Network is well deserved.

I am very honoured and proud to be the founder and the Hon President of WIN. I always have every confidence for Way In ladies to do a good job.

I would like to take this opportunity once again to wish The Way In Network 27th Anniversary Charity Gala Ball every success! Please enjoy the Gala Ball!

Hon Dr Helen Sham-Ho OAM JP
Way In Network Founder/ Honorary President

ABOUT WAY IN NETWORK

Way In Network was established in 1992 with the initiative by The Honourable Dr Helen Sham Ho to build a support network for the migrant women during their settlement in Australia.

Over the years, Way In Network has evolved into a well-known and trusted charity organisation amongst the local community with the key objective of raising funds to assist those in need in Australia and overseas. The NSW Government awarded Way In Network on two separate occasions in 2002 and 2013 for Outstanding Community Services.

The current management committee is led by President Annie Tang JP and with Past Presidents Mrs. Florence Chau JP and Ms Linda Tang JP as Honorary Advisors. Members include migrant women from Hong Kong, China, Singapore, Indonesia, Malaysia, Thailand and Taiwan. Most of our members hold professional positions in industries spanning from banking, finance, accounting, public relations and welfare to the public services. Others operate their own successful businesses in Australia and or overseas, whilst others are homemakers. As an ongoing process, our members continue to assist new female migrants to settle in Sydney.

Since inception, Way In Network has successfully raised over AUD\$3.5 million in funds for our local community and for international disasters. With these funds, Way In Network had donated to various causes such as:

Australian Chinese Charity Foundation (ACCF)	Special Children Services Centre
Australian Gynaecological Cancer Foundation (AGCF) - Post Doctoral Fellowship Grant	St George Hospital
Australian Red Cross	The Asthma Foundation of NSW
Barnardos Australia	The Australian Paralympics Federation
CanRevive Inc	The Heart to Heart Foundation
China Vision Inc	The Leukaemia Foundation of NSW (Royal North Shore Hospital)
Chinese Parent's Association – Children with Disabilities	The Millennium of Cardiology (Westmead Hospital)
Cyclone Vanuatu 2015 Appeal	The Millennium of Storrs Liver Unit (Westmead Hospital)
First Light Care Association Incorporated	The Royal Blind Society of NSW
Gaoyao Youth English Centre (China)	The Royal Institute for Deaf & Blind Children
Haiti Earthquake Appeal	World Vision – Aboriginal Youth Program
Joyful Foundation (Hong Kong)	University of Sydney – Female post-graduate scholarship
Queensland Flood Relief Appeal	University of Sydney & the Chinese University of Hong Kong — ACCLAIM medical research project
Salvation Army	

In 2017 the Australian Gynaecological Cancer Foundation (AGCF) formed a partnership with Way In Network to create a new post-doctoral fellowship grant to support a research project aligned with the AGCF priorities. Way In Network is a proud Ambassador for AGCF.

The annual Elderly Luncheon is a signature event in the Way In Network calendar. The organisation hosts this event annually for more than 300 elderly people in Chinatown. The senior with its life experience, possesses an incredible amount of strength, wisdom and knowledge to the community. With this event offering them deserved respect and recognition and teaching our younger generation to do the same. The elderly participants will be pampered with plenty of presents, entertainment and social network to reinforce a sense of worthiness.

Way In Network aspires to continue assisting those in need in our local community and internationally in many years to come.

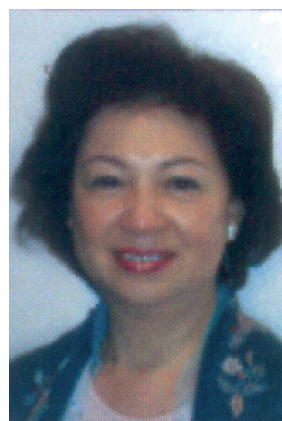
HONORARY & FORMER PRESIDENTS



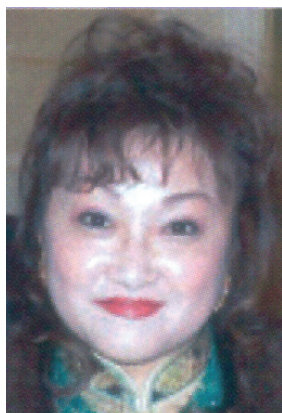
Founder, Honorary President
Hon. Dr. Helen Sham-Ho OAM JP
創會人名譽會長何沈慧霞博士



Founding President
Christine Ho
首屆前會長何鄭淑嫻
Year 1992 - 1993



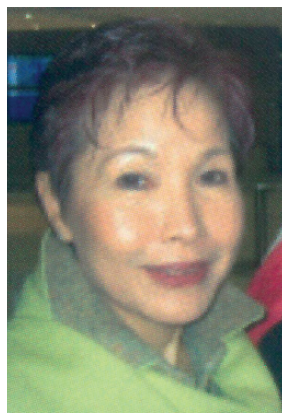
Former President
Lui Choi Kook Fun
前會長雷蔡菊芬
Year 1993 - 1996



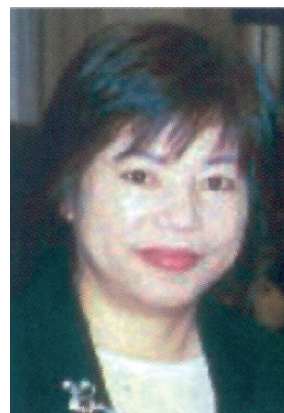
Former President
Emily Hung
前會長洪林港妹
Year 1996 - 1997



Former President
Linda Wong
前會長黃甘燕玲
Year 1997 - 1999
Year 2002 - 2006



Former President
Rita Yip
前會長葉麥鳳賢
Year 1999 - 2000



Former President
Lavender Tsim
前會長詹彭錦端
Year 2000 - 2002



Former President
Florence Chau JP
前會長周梁淑儀太平紳士
Year 2006 - 2011



Former President
Annie Tang JP
前會長鄧小穎太平紳士
Year 2011 - 2013



Former President
Linda Tang JP
前會長鄧紫瑩太平紳士
Year 2013 - 2015



Former President
Elsa Shum
前會長岑呂蕙蘭
Year 2015 - 2017

2017 - 2019 COMMITTEE



President
Annie Tang JP
會長鄧小穎太平紳士



Hon. Advisor
Linda Tang JP
名譽顧問鄧紫螢太平紳士



Hon. Advisor
Florence Chau JP
名譽顧問周梁淑儀太平紳士



Vice President (Senior)
Jessie Xiao
常務副會長蕭嘉敏



Vice President (Admin)
Daisy Lam
行政副會長董秀玲



Vice President (External)
Felicia Hon JP
外事副會長韓忠敏太平紳士



Secretary (English)
Rosanna Ng JP
英文秘書吳黃玉桂太平紳士



Secretary (Chinese)
Faith Tan
中文秘書譚勁韶



Treasurer
Vivienne Yim (Yik Ting)
財政閻翊婷



Public Officer
Monica Chu
公務主任朱潘敏嘉



General Affair Officer
Lisa Harris
常務主任關麗莎



Public Relation Officer
Anny Chan
公共關係主任陳趙惠卿



Event Project Officer
Stella So
文娛統籌主任蘇家儀



Committee Member
Gabby Kwok
委員郭羅尹兵



Committee Member
Eugenia Lieu JP
委員廖雅淡太平紳士



Committee Member
Brenda Xiao
委員蕭紅燕



Committee Member
Rita Bourtsev
委員何楚茵



Committee Member
Jacques Wong
委員王曉穎



Committee Member
Nicole He
委員何彥君



Committee Member
Rosy Li
委員李露明



Committee Member
Mandy Van JP
委員徐浩汶太平紳士

WAY IN OBJECTIVES



培養獨立能力，增強自信
To develop self-esteem and
to cultivate self confidence amongst Asian migrants living in Australia.

促進聯繫，互相溝通
To promote mutual understanding and
to increase communication across communities.

融入主流社會，服務人群
To integrate into the mainstream society and
to support community activities and services.

WAY IN NETWORK 2017 - 2019



WAY IN NETWORK 2017 - 2019



WAY IN NETWORK 2017 - 2019



WAY IN NETWORK 2017 - 2019



WAY IN NETWORK 2017 - 2019





MENU

Freshly Baked Bread Rolls & Butter

COLD CANAPES

Prawn cocktail & avocado mousse served on a cucumber
Wagyu beef bresaola, pickled beetroot & watercress, parmesan tuile

ALTERNATE ENTRÉE

Cured Australian salmon served with beetroot mayonnaise, pumpkin puree & fennel vinaigrette
Smoked turkey chopped eggs, cranberry jelee, dark rye wafer, dehydrated cherry, micro watercress

ALTERNATE MAIN COURSE

Pork belly, crackling, mellowed kim-chi, spring onion salad
Corn-fed chicken breast, piment d'Espelette, roasted capsicum veloute, charred corn & chorizo

ALTERNATE DESSERT

Mango & passionfruit curd pavlova, vanilla double cream & berry compote
Warm sticky fig pudding, butterscotch sauce & cinnamon ice cream



Freshly Brewed Coffee & Tea

PROGRAMME

MASTER OF CEREMONY

Nicole He

OPENING PERFORMANCE

Sydney Cambridge Talent College

WELCOME SPEECH

Annie Tang JP - President of Way In Network

ADDRESS BY GUESTS OF HONOURS

The Hon. David Coleman MP

Member for Banks

Minister for Immigration, Citizenship & Multicultural Affairs

The Hon. Victor Dominello MP

Member for Ryde

Minister for Finance, Services & Property

Representing NSW Premier, The Hon. Gladys Berejiklian

Ms Jodi McKay MP

Member for Strathfield

Shadow Minister for Transport, and Shadow Minister for Roads, Maritime and Freight

Representing NSW Leader of the Opposition Michael Daley MP

Ms Winnie Chan

Deputy Director of Hong Kong Economic & Trade Office Sydney

The Government of the HKSAR

CHILDREN FASHION PARADE

School's Out Designer Kidswear & ED5 International

WAY IN NETWORK 27 YEARS SNAPSHOTS

Cake Cutting & Photo Session

APPEAL BY RIDBC & W2IRED

AUCTION

ENTERTAINMENT – DISNEY TRIO

ANNOUNCEMENT OF SILENT AUCTION RESULT

CHEQUE PRESENTATION

VOTE OF THANKS

Hon. Dr Helen Sham Ho OAM JP

RAFFLE DRAW

DANCING

EVENT CONCLUDES

ACKNOWLEDGEMENT

DIAMOND SPONSORS



URBAN STELLAR

GOLD SPONSORS



THINK AND GROW PTY. LTD.
MARKETING STRATEGY TO PRODUCTION MADE EASY



CORPORATE SPONSORS



CASTLE
GROUP



澳洲順德聯誼總會
Shunde Association of Australia Inc.



CHARITY DONATIONS

National Auto Glass Supplies
Shayher Group
Scott Yung
Lisa Harris
Grace Chow

Anne Bi - BI Group
Benny He
Angela Yang
Linda McGarry
Queeny Ho

Umi Sushi
June He
Elizabeth Pang
David Chung

Milton Park Country House Hotel
Rita He
Ellie Huang
Linda Tang JP

DISNEY TRIO PERFORMANCE SPONSORED BY

All Architectural Hardware Pty Ltd.

BIRTHDAY CAKE & SOUVENIR COOKIES SPONSORED BY

Umi Sushi. Designed by Evelyn Shek

PREMIUM RAFFLE SOUVENIRS SPONSORED BY

Elle Jewellery

FLOOR MANAGER

Suet Yee Cheung

OPENING PERFORMANCE BY

Sydney Cambridge Talent College

CHILDREN FASHION PARADE BY

School's Out Designer Kidswear & ED5 International

VOLUNTEERS

Anna Chen
Danni Wang
Calvin Leung

Martin Kuo
Sonia Mo
Zara Qiu

Helen Chen
Anny Chan
Adrian Ng

Kristine Jian
Sylvia Lan
Lyn Lyu

Jack Mao
Evelyn Shek

AUCTION ITEMS



PASPALEY
THE MOST BEAUTIFUL PEARLS IN THE WORLD

Paspaley - Lavalier

Lavalier is a unique design, encasing your favourite Paspaley pearl in a delicate gold mesh net. This rose gold Lavalier holds a beautiful 15mm circled pearl. This unique pearl features natural rings that developed as the pearl formed. Discover the Paspaley story, and their Signature Collections at Paspaley.com RRP\$5,160



BAUME & MERCIER
瑞士·高級18K金·瑞士製造

Shum's
岑氏鐘錶珠寶行
SHUM'S WATCHES & JEWELLERY

Baume & Mercier (Swiss Made)

Men's Clifton Automatic, features a 41mm case dimension whose double bezel form is reminiscent of a Baume & Mercier timepiece from the 1950's. Powered by a Swiss Made automatic movement featuring stainless steel case, date functions, silver dial and gold markers, delivered on a 18K two-tone stainless steel and rose gold bracelet. RRP \$6,300



HARRY GEORJE
DIAMONDS
EST. 1984

Harry Geroje Diamonds

18ct white gold hand-made butterfly necklace with 18ct Italian link chain, the butterfly pendant is set with thirteen diamonds and seventy-six African tsavorite Garnets set in pave style setting. The piece will be accompanied by a certificate of authenticity and official valuation. Retail Value \$8,500



NEW WORLD
Telecom
PARTNER

Apple iPhone XR 64GB Coral

Donated By Kin Kwong & Gary Tsui / Newworld Telecom T Partner RRP \$1,299



Box of 6 Penfolds Grange

Enjoy this wonderful opportunity for 6 bottles of Penfolds Grange packed in a wooden box and have the honour signed by:-
The Hon. David Coleman MP, Minister for Immigration, Citizenship & Multicultural Affairs
The Hon. Gladys Berejiklian, Premier of New South Wales
RRP\$ 4,000

Donated by Faith Tan



LOUIS XIII
Remy de Martin
COGNAC GRANDE CHAMPAGNE

Louis XIII Cognac

LOUIS XIII is an exquisite blend of up to 1,200 eaux-de-vie sourced 100% from Grande Champagne, the first cru of the Cognac region. The legendary decanters have been made from fine crystal for generations, mouth-blown by the most skilled master craftsmen. LOUIS XIII features exceptional aromas evoking myrrh, honey, dried roses, plum, honeysuckle, cigar box, leather, figs and passion fruit. RRP\$ 4,000



ZILVER
CHINESE CUISINE ALLURE
同樂軒

Deluxe Buddhas Jump Over the Wall Banquet

For 10 people
極品佛跳牆宴 (十人宴)
Valued at: \$3,088

Valid until 28th June 2019 by Zilver Group

SILENT AUCTION ITEMS



Dried Seafood Gift Set
Donated by: Port No. 5
Australian Sea Products



Majestic Birds Nest
Donated by: Majestic Nest

Majestic Bird's Nest is prepared with the finest quality of ingredients harvested sustainably from the Islands of Indonesia. Each bird's nest is handpicked with care, manufactured under strict industry standards and imported into Australia with an AQIS approved license. The preparation process sterilised the product entirely by heat and pure clean water, no chemical cleaning agents, flavouring or colouring is added.



Unisex Tag Heuer sunglasses
Donated by: Monica Chu



Chinese Deluxe Food Hamper
Donated by: Heng Fai Trading - Milly Yang



De - Vesi Hand Painted De Limone Bag
Donated by: Florence Chau



Chinese Deluxe Food Hamper
Donated by: Heng Fai Trading - Milly Yang



Royal Salute 1801 Scotch Whisky 21 years
Donated by: Felicia Hon



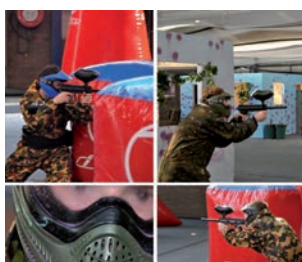
Kate Spade Handbag With Card Holder
Donated by: Linda Tang JP



Needle Crafts
Donated by: Shinta Taylor



Embroidered Fan Ornament
Donated by: Faith Tan



Paintball game for 10 players
Donated by: Mandy Tsui



Two Bottles of Chinese Wines
Donated by: Heng Fai Trading - Milly Yang

RAFFLE PRIZES

PREMIUM RAFFLE PRIZES	ITEMS	SPONSORED BY
P1	Google Pixel 2 XL Mobile Phone 64GB	Kin Kwong & Gary Tsui / NewworldTelecom T Partner
P2	Dior Cosmetic Hamper	Dior
P3	Sydney Hilton Hotel Guest Room for 1 night & breakfast for 2 person	Sydney Hilton
P4	Gucci Scarf	Shinta Taylor
P5	Penfolds St Henri	Coco Zhou
P6	Russian Vodka testing set	Anton Bourtsev
P7	Tiffany & Co. Bracelet	June He
P8	Longchamp Leather Wallet	Florence Chau
P9	Emilio Pucci Cosmetic Bag	Annie Tang JP
P10	Chinese Deluxe Food Hamper	Milly Yang
P11	Sterling Silver Semi Precious Stone Jewellery Set	Elle Jewellery
P12	Guizhou Xi Wine 1 Litre	Ettason Pty Ltd

RAFFLE PRIZES	ITEMS	SPONSORED BY
1	Heng Fai Foods	Milly Yang
2	Heng Fai Foods	Milly Yang
3	Heng Fai Foods	Milly Yang
4	Heng Fai Foods	Milly Yang
5	Heng Fai Foods	Milly Yang
6	Heng Fai Foods	Milly Yang
7	Chanel perfume	Linda Tang JP
8	Tea gift pack	Linda Tang JP
9	Tiffany gift	Sally You
10	Tiffany gift	Sally You
11	Dinner Voucher \$100	Golden Century
12	Dinner Voucher \$100	Golden Century
13	Dinner Voucher \$100	Golden Century
14	Dinner Voucher \$100	Golden Century
15	Dinner Voucher \$100	Golden Century
16	Hair Dryer gift set	Florence Chau
17	Longchamp Hand Bag	Florence Chau
18	Chinese Tea gift set	Florence Chau
19	Photobook by Lee Fook Chee	HKETO
20	Limited Edition Album	Leonard Shi Qi Da
21	Taste of Shunde Dinner voucher \$100	Taste of Shunde
22	Taste of Shunde Dinner voucher \$100	Taste of Shunde
23	Taste of Shunde Dinner voucher \$100	Taste of Shunde
24	Glenfiddich whisky x 2 bottles	Shinta Taylor
25	Swarovski Crystal D/Bangal	Nicole He
26	L'occitane gift set	Anny Chan
27	Beauty voucher \$100	Sky Beauty
28	Beauty voucher \$100	Sky Beauty
29	Beauty voucher \$100	Sky Beauty
30	Sterling Silver necklace	Elle Jewellery
31	Sterling Silver necklace	Elle Jewellery
32	Crabtree and Evelyn Rose Oil gift set	Brenda Xiao
33	UMI Dining Voucher \$100	UMI Sushi
34	UMI Dining Voucher \$100	UMI Sushi
35	UMI Dining Voucher \$100	UMI Sushi
36	L'occitane hand cream	Felicia Hon
37	David Jones voucher \$100	Eugenia Lieu JP
38	Luve Hair Spa voucher \$100	LUVE
39	Luve Hair Spa voucher \$100	LUVE
40	Ear Ring	Gabby Kwok
41	Vase	Gabby Kwok
42	Food products	Rosy Li
43	Food products	Rosy Li
44	Huon Pine board with knife	Rossana Ng
45	Coach Wallet Set	Rossana Ng
46	Bayeco skincare set	Bayeco
47	Bayeco skincare set	Bayeco
48	Bayeco skincare set	Bayeco
49	Swarovski Pens Set	Annie Tang JP
50	Tea Gift Set	Annie Tang JP



URBAN STELLAR

City Living, Urban Stellar.



Stellar Hurstville
2-10 Woniora Rd, Hurstville



Highbury Rouse Hill
103 Schofields Rd, Rouse Hill



Gusto Rosebery
39-47 Mentmore Avenue, Rosebery



Bayview Kogarah
89-103 Princes Highway, Kogarah

Urban Stellar is a Sydney-based independent property developer with a unique heritage of distinction and service.

We deliver projects that offer the very best of Sydney's vibrant lifestyle – matching exceptional locations with ageless design – ensuring owners and investors enjoy the rich rewards of the world's most liveable city.

Contact Us 1800 928 022
www.urbanstellar.com.au



ON THE CUTTING EDGE 走在時代尖端

Shayher Group has delivered exceptional developments in amenity-rich locations in Australia.

協和集團在澳大利亞各州卓越的地點開發多項大型
嶄新設計的酒店及商住綜合用途項目



W Hotel Brisbane



Hurstville Times Plaza



"Pentridge" Coburg VIC



The Hamilton QLD



shayhergroup

CONGRATULATIONS



*Our heartiest congratulations to Honorary President –
The Hon. Dr Helen Sham Ho OAM JP, President Annie Tang JP &
ladies of Way In Network on your 27 years achievement & milestone!*

*Wish you all every success and continue to grow & prosper for your
charity mission!*

Scott Yung & Family





CELEBRATING

24
Years



THINK AND GROW PTY. LTD.
MARKETING STRATEGY TO PRODUCTION MADE EASY

T: +61 2 9221 6188
tag@tagonline.com.au
www.tagonline.com.au



點點心意

嚐在同樂軒

童心同樂包



核桃包



香脆紅米腸



好得戚臘腸包



櫻花仙子



香脆鯪魚球



滿園春色餃



獨家尊享地庫泊車優惠
www.zilver.com.au
T:9211 2232



L I F E I S A B O U T M O M E N T S



baume-et-mercier.com

Classima Quartz Steel 31mm

Baumatic™ In-house self-winding Two-tone 40mm

岑氏鐘錶首飾行
SHUM'S WATCHES & JEWELLERY



BAUME & MERCIER
MAISON D'HORLOGERIE GENEVE 1830



PASPALEY

THE MOST BEAUTIFUL PEARLS IN THE WORLD

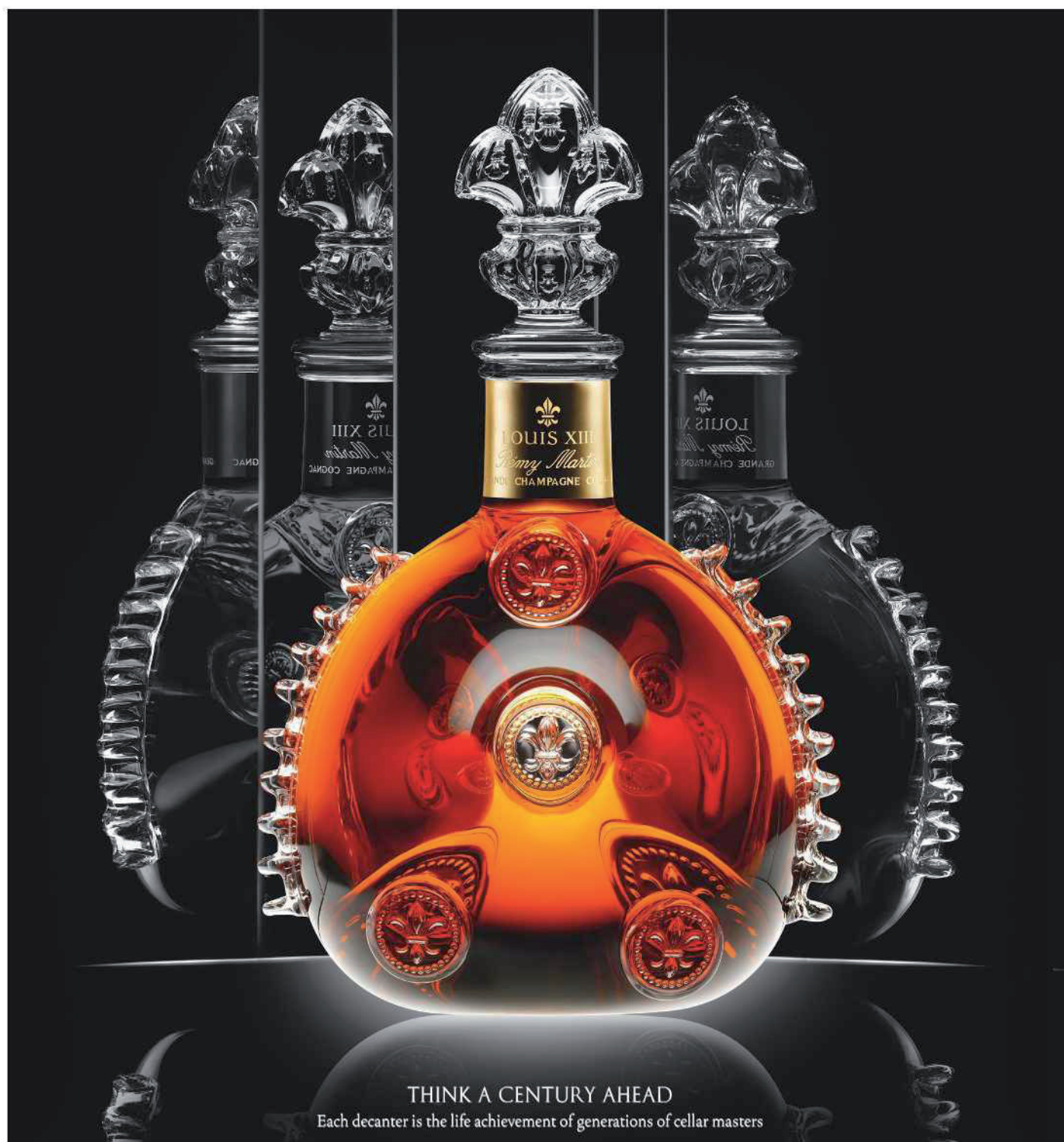
PASPALEY.COM



LOUIS XIII

de Remy Martin

COGNAC GRANDE CHAMPAGNE



THINK A CENTURY AHEAD

Each decanter is the life achievement of generations of cellar masters

www.LOUISXIII-COGNAC.com

DRINK RESPONSIBLY

HARRY  GEORJE[®]

EST. 1984


invest in beauty[®]



BESPOKE JEWELLERY
&
INVESTMENT DIAMONDS

Suite 106, Level 1
350 George St
Sydney NSW 2000
Australia
+61 2 9222 9736

Harry Georje Diamonds Australia Pty Ltd
ABN 17 614 375 138

info@harrygeorje.com
www.harrygeorje.com
 [harrygeorje](#)

Does Your Tap Water Contain Lead(Pb)

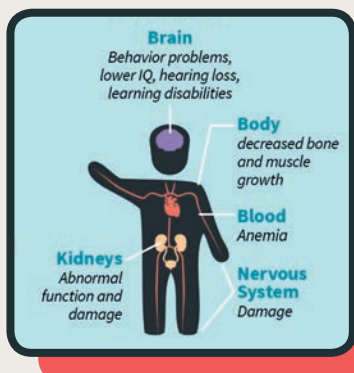
你家水龍頭是否含鉛危害你和家人的健康



Lead - Effect On Humans 鉛的危害

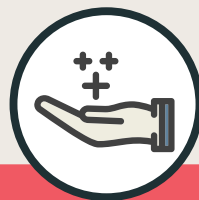
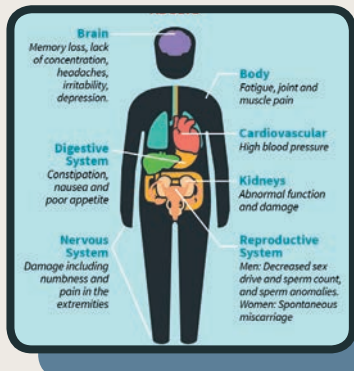
Children 對孩童的危害

- Learning disabilities resulting in a decreased intelligence (decreased IQ) 學習障礙，智力下降
- Attention deficit disorder 注意力缺損/缺失症
- Speech and language impairment 語言障礙
- Nervous system damage 神經系統損害
- Decreased muscle growth and bone growth 肌肉與骨骼生長減緩
- Kidney damage 腎功能損害



Adults 對成人的危害

- Increase chance of illness during pregnancy 孕期疾病概率增加
- Harm to fetus, including brain damage or death 導致胎兒腦部傷害或至死亡
- Fertility problems in both men and women 影響男女生育問題
- High blood pressure, muscle and joint pain 高血壓肌肉關節疼痛
- Digestive issues and nerve disorders 消化系統問題，神經系統紊亂
- Memory and concentration problems 記憶衰退，注意力減退



BENEFITS OF AAH LEAD FREE TAPWARE

AAH全不鏽鋼無鉛水龍頭的產品優勢

- Corrosion Resistance 防腐蝕
- Free from Toxic Chemicals 不含有毒物質
- Hygiene 衛生安全
- Easy to clean and maintain 清結維護簡便
- Aesthetic Appearance 外形美觀
- Eco-friendly 環保



3 COURSE + DRINK SET MENU

\$28 PP

SERVING ALL DAY



1. Entrée: Choose any 2 sushi plate from train.
(Except black plate)

2. Main: Choose 1 of the following main with rice.
(Teriyaki Chicken, Chicken Karaage, Tempura Vegetables or Wagyu Nabeyaki udon)

3. Drink: Choose your drink from the following.
(Beer, wine, sake or soft drinks)

4. Dessert: Daifuku (red bean mochi) with fruits

www.umisushi.com.au

Available at Umi Sushi + Udon | Shop TR-10, Darling Quarter, 1-25 Harbour St, Sydney NSW 2000



#UMISUSHIAUS1



#UMISUSHIAUS



#UMISUSHIRESTaurant



澳洲悉尼華人賽馬會

Australian Chinese Jockey Club - Sydney

- Horse Racing
- Horse Ownership
- Business Networking
- Lifestyle



www.acjc.org.au

FOR MORE INFORMATION PLEASE CONTACT

Jaco Chan
0431 344 864
jaco.chan@acjc.org.au

Calvin Leung
0410 883 552
calvin.leung@acjc.org.au



澳洲雪梨中華佛學會明月居士林

Australian Chinese Buddhist Society

654 Cabramatta Rd. Bonnyrigg., NSW 2177

Tel: 02 9823 3622 Fax: 02 9823 3803



本林服務項目

佛事

1. 佛誕誦經功德
2. 皈依
3. 開光
4. 祈福消災
5. 供齋

法事

1. 往生助念
2. 治喪出殯法會
3. 七七法會
4. 對年法會
5. 各種超薦法會

永恆住所(提供莊嚴寧靜環境)

1. 供奉先人牌位於中華公祠，領受百家香火，一起聆聽法師誦經，早日往生淨土。
2. 安置先人骨灰位於追遠堂或報德堂，方便十方善信悼念追思親友。

分享與互助

1. 設會員制：
凡加入本會會員可提前獲得本會寄信通知各項訊息
凡成為本會有效會員可獲得本林各項優惠服務
2. 報德善社：
以互助互利宗旨為照顧本會會員得到善終服務

代辦服務

1. 代客擇日：婚禮、喪事等
2. 代辦各種供佛香燭、衣紙
3. 代辦各式供靈必用之經被、壽衣、金銀紙、紙紮大屋、汽車、衣鞋等
4. 代寫靈前孝子幛、訃告等
5. 代製孝服：傳統式或簡單式
6. 接待各界團體、校外教學禮佛參觀
7. 專車接送往返卡市火車站及居士林
農曆每月初一、十五，
農曆新年、盂蘭勝會、
浴佛節、觀音誕、
藥師誕、會員大會等



恭賀
慧賢會成立27週年誌慶

樂 博
善 施
好 濟
施 眾

澳洲新會中華文化中心 恭賀

Address: 19 Barclay Street, Marrickville NSW 2204 Australia
E: info@axhccc.com.au
W: www.axhccc.com.au



PERERA & MOODLEY FOUNDATION

Ritchie Perera and Kren Moodley are co-founders and directors of Castle Group - a leading property development company and Smart Living Homes - the building and construction subsidiary, plus a host of business interests in Finance, Technology & Start-ups, Marketing and Events. **They also share a deep passion for philanthropy and sharing goodwill.**

The Foundation is currently involved in a number of community projects in the areas of anti bullying education, domestic violence initiatives, supporting health programs and working with underprivileged sectors of the community.

More info: www.castlegroup.com.au



Luxury Homes Now Selling

Rouse Hill | Kellyville | Riverstone | Schofields

VISIT OUR DISPLAY SUITE & DISPLAY HOME AVAILABLE 7 DAYS

BY APPOINTMENT

Weekdays 10am - 9pm

Weekends 10am - 4pm



1800 1 CASTLE



castlegroup.com.au



sales@castlegroup.com.au

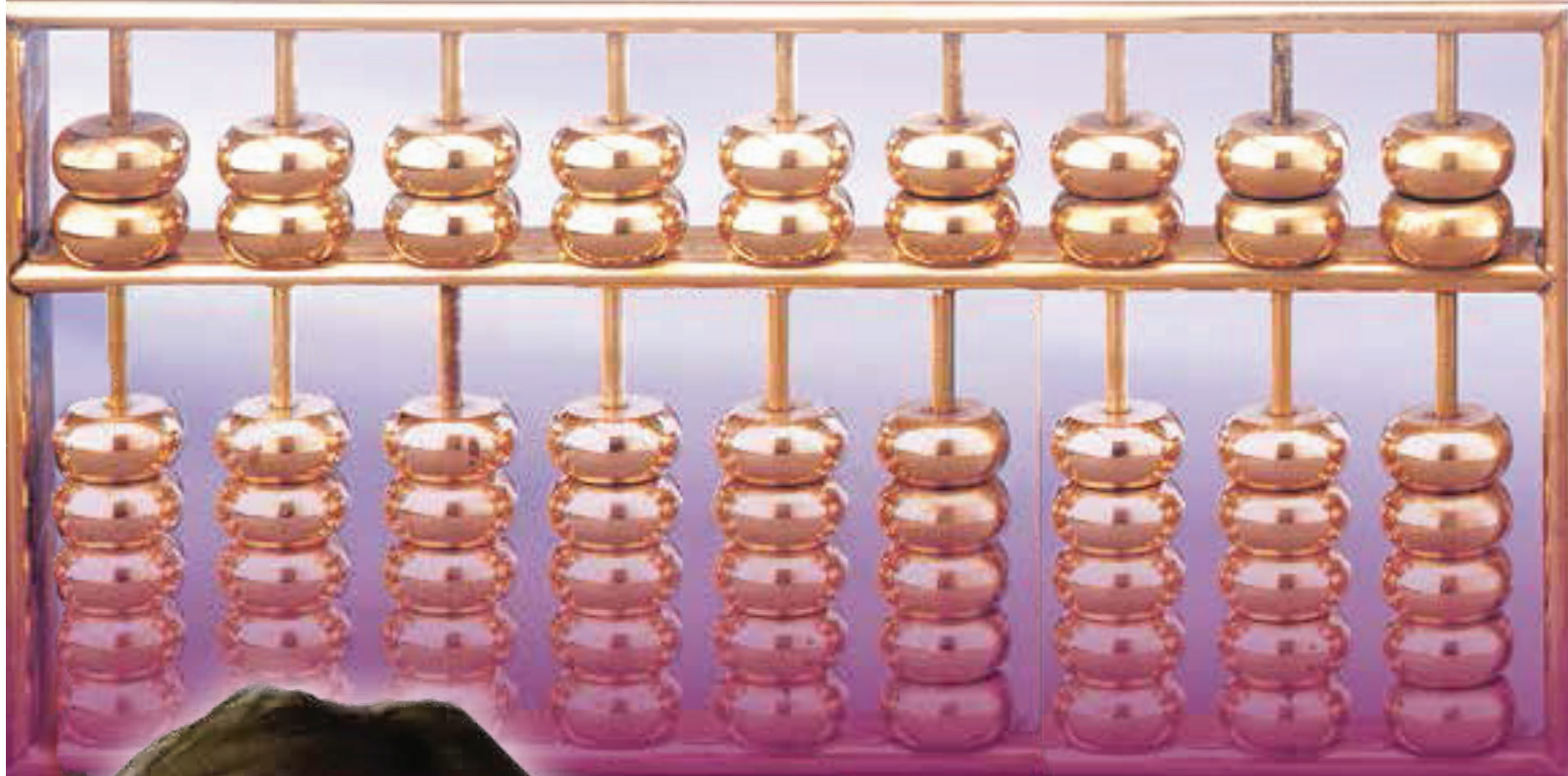


Suite 401, 2-8 Brookhollow Ave,
Norwest NSW 2153



智慧投資的配合

Smart Choice for your investment finance



We are specialised in

- › Owner Occupied Home Loans
- › Investment Property Loans
- › Construction Property Loans
- › Business Loans
- › Commercial Loans

E Smart Finance Pty Ltd

ABN 38 101 980 545

5E / 9 - 13 Redmyre Road, Strathfield NSW 2135

P: 9763 7082 F: 9763 7083 M: 0411 186 321

E: eesmartf@bigpond.net.au

廖雅淡

Eugenia Lieu J.P.

Australian Credit

Licence no. 388460

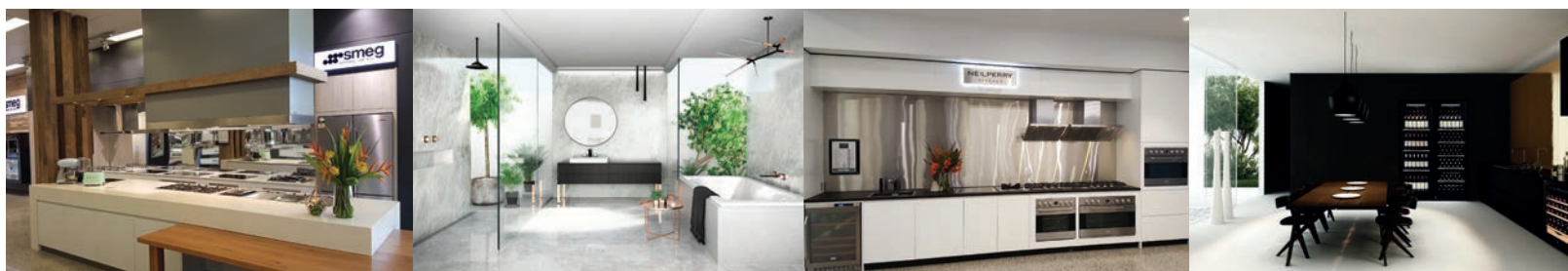
Harvey Norman

COMMERCIAL DIVISION



商务展厅
为以下人士特别设计

建筑师，设计师，建筑商，开发商和承包商



浴室 / 洗衣房用品

厨房 / 烹饪电器

烧烤 / 户外系列

冰箱 / 酒柜

水龙头及配件

热水系统

太阳能产品

空调

智能家居系统

商用家具 家具，固定装置和设备



在位于MITCHELL
和 TAREN POINT
的展厅
通过在线虚拟
现实（VR）手段了
解我们的产品



我们的宗旨是
以最优惠的价格
提供来自
最好的供应商的
最好的产品
并提供
最好的售前服务和
最好的售后服务！



- 住房开发 • 酒吧 • 俱乐部 • 公寓 • 退休村 • 学校
- 办公室会议室 • 酒店 • 汽车旅馆 • 促销公司 • 政府部门
- 工厂 • 矿山 • 体育组织 • 大学 • 医院

PROUD MEMBERS OF THE MBA



HOUSING INDUSTRY ASSOCIATION



距离您最近的展厅位于 **15-21 ATKINSON ROAD TAREN POINT NSW**

预约参观展厅或获取进一步的信息，请联络：

ALLYSON QUARATINO

02 9710 4393 | allyson.quaratino@au.harveynorman.com

Find us on

www.harveynormancommercial.com.au



恒輝貿易有限公司

HENG FAI TRADING CO. PTY. LTD.

Tel: (02) 9723 6883 Fax: (02) 9754 2228

E-mail: sales@hengfai.com.au

Website: www.hengfai.com.au

以誠為本 以客為尊 誠信鑄造 百年品牌
We honour our customers with respect and sincerity.



經營範圍

參茸海味 名貴藥材 天然菌類 強身湯料 華洋雜貨 休閒零食



恒輝貿易有限公司

HENG FAI TRADING CO. PTY. LTD.

Tel: (02) 9723 6883 E-mail: sales@hengfai.com.au

Fax: (02) 9754 2228 Website: www.hengfai.com.au

以誠為本
以客為尊
誠信鑄造
百年品牌

獨家代理 品質保證



中國龜苓膏行業領導品牌

龜苓膏 就是生和堂

千年古方 · 養顏聖品

龜苓膏有助於滋陰補腎、潤燥護膚、消除暗瘡、調理臟腑、清熱解毒、防止膚質老化及便秘，能促進新陳代謝，提升人體免疫力，是現代人不可或缺之養生聖品。



專利證號: ZL 2012 1 0582060.X

各大華人超市均有銷售



杯裝龜苓膏



吸吸龜苓膏



散裝龜苓膏



Norton Building Supplies

SEE THE *DIFFERENCE*



We supply Windows & Doors for

- Home
- Office / Shop
- Project

Aesthetic Appearance
Architectural Elegance



(02) 8964 5201



Shop 1, 100 Regent St Redfern





Sky Beauty Cosmetic Clinic 星辰医美诊所

02-9281 7889

Suite 601, Level 6, 405 Sussex St, Haymarket



Infini 黄金射频

Ultherapy 超声刀

Skinbooster 水光针

Thread Lift 全脸线雕

Wrinkle Injection 祛皱针

4D Picoplus 皮秒镭射

Body Slimming 瘦身管理

Therapy Massage 中医理疗

PRP Micro Needling 自体血清微针



Dr Michael Tse

Cosmetic Physician

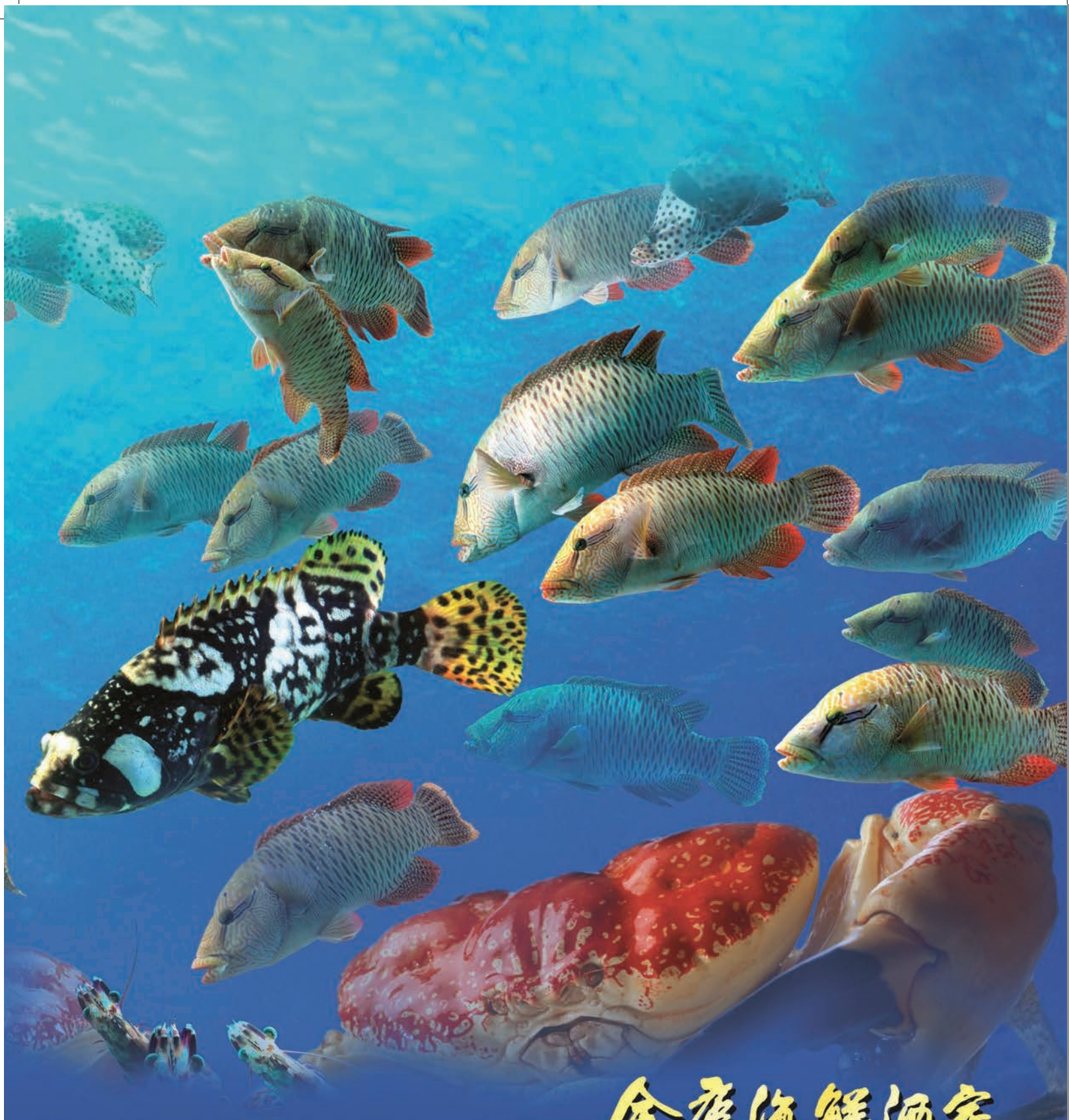
MBBS(Hons.Syd.)

Fellow of the Royal Australian College of General Practitioner

Diploma of Aesthetic Medicine

(American Academy of Aesthetic Medicine)

Inaugural Full Member of Cosmetic Physician College of Australia



金唐海鮮酒家

GOLDEN CENTURY SEAFOOD RESTAURANT

393-399 Sussex Street, Haymarket NSW 2000 Ph 9212 3901 Fax 9211 6292

Trading Hour 12pm - 4am

金唐薈

THE CENTURY

The Star, Pirrama Road, Pyrmont NSW 2009

T 61 2 9566 2328 F 61 2 9552 3773 E thecentury@goldencentury.com.au

Open Hours: Lunch: 11:30am-5:00pm Dinner: 5:30pm - 11:00pm Super: 11:00pm-12:00am (Fri & Sat only)



Milton Park

COUNTRY HOUSE HOTEL & SPA

Live the Fairytale



- THE SOUTHERN HIGHLANDS' LEADING WEDDING VENUE
- MAGNIFICENT WELLNESS SPA • LUXURIOUS ACCOMMODATION
 - HEALTH & FITNESS CLUB MEMBERSHIPS AVAILABLE
 - CONFERENCE FACILITIES FOR 20 TO 200 GUESTS
- AWARD WINNING CUISINE
- HORDERN'S FINE DINING RESTAURANT
- ORANGERIE LUNCH & HIGH TEA • WORLD RENOWNED GARDENS
- EXCLUSIVE POLO BAR MEMBERSHIPS AVAILABLE



THE MILTON PARK ESTATE
HORDERNS ROAD, BOWRAL NSW 2576
T+61 2 48 61 8100
RESERVATIONS@MILTONPARK.COM.AU
WWW.MILTONPARK.COM.AU



華埠物理治療診所

CHINATOWN PHYSIOTHERAPY CENTRE



駐診物理治療師：

吳黃玉桂
楊明珊
施明營
李明勳

Rosanna Ng
Josephine Yeung
Rudy Sze
Max Lee

T 02 9281 2743

F 02 9211 7425

本診所專治各種
腰痠背痛、筋腱肌肉扭傷、頸痛、
坐骨神經痛、關節炎、運動創傷、
手術與工傷及交通意外後康復等，
歡迎致電預約查詢。

QG6 Prince Centre
8 Quay Street, Haymarket NSW 2000

E chinatownphysio@bigpond.com W www.chinatownphysio.com.au

.....

CONGRATULATIONS ON THE 27th ANNIVERSARY OF *Way In Network*

FROM :

DR LISA CHENG 鄭雅莊醫生 & PROF DANFORN LIM 林奇恩教授
Specialist Medical Services Group 專科醫療服務集團

.....



**SPECIALIST
medical
SERVICES**

www.specialistmedicalservices.com.au



**EARWOOD
medical
CENTRE**

2015 & 2016 LOCAL BUSINESS AWARD WINNER
2018 AUSTRALIAN SMALL BUSINESS CHAMPION AWARD WINNER

(02) 9554 7788

356 Homer St. Earlwood NSW 2206
www.earwoodmedical.com.au



**ACADEMIC SPECIALISTS
CENTRE**

Ground Floor, 260-262 Beamish St. Campsie NSW 2194
(02) 8580 2328 www.aspecentre.com.au



**BANGOR
medical
CENTRE**

(02) 8582 1318

Shop 6, Bangor Shopping Centre
121 Yala Rd Bangor NSW 2234
www.bangormedical.com.au



**RAMSGATE BEACH
medical
CENTRE**

(02) 7923 9103

Ground Floor, 209 Ramsgate Rd,
Ramsgate Beach NSW 2217
www.ramsgatebeachmedical.com.au



永昇會計師樓

JJ Accounting & Finance Pty Ltd

十多年澳洲稅務會計經驗

❖ 悉尼科技大學會計學士

❖ 澳洲政府註冊稅務代理 (TA 73883)

❖ 澳洲稅務協會會員

❖ 澳洲註冊會計師CPA

專業服務範圍

- 個人及公司企業報稅
- 季度GST, BAS報表
- 承接各行業全年做帳
- 成立自管養老金, 家庭基金

營業時間: 星期一至五 9:30AM-5:30PM (週六可預約)

Address: Level 1, 342 Forest Rd. Hurstville

PO BOX 917 Hurstville NSW 2220

Tel: (02) 9586 0459

Mobile: 0411 667 268



17504415JJ 160805AP Ah

永盛信貸

您身邊的 貸款專家

住宅浮動利率 **3.89%***
住宅固定利率 **3.99%***



貸款熱線: (02) 9586 0459 Mobile: 0411 667 268

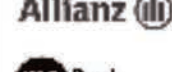
歡迎親臨或來電諮詢 (國.粵.英.客家.)

Australian Credit Licence: 462443

- 代理全澳各大銀行及非銀行基金產品, 掌握第一手諮詢, 貸款額高達80%
- 專業工作人士 / 自願生意 / 工作經驗不足者均可為您選出最佳產品
- 住宅浮動利率3.89% / 固定利率3.99% / 商業貸款浮動利率5.53% / 固定利率4.60%
- 專業團隊助您享受優惠利率快捷順利獲批貸款, 特別適合投資者

*Limited time only and terms & conditions apply.

Hurstville 地址: Level 1, 342 Forest Rd, Hurstville, NSW 2220

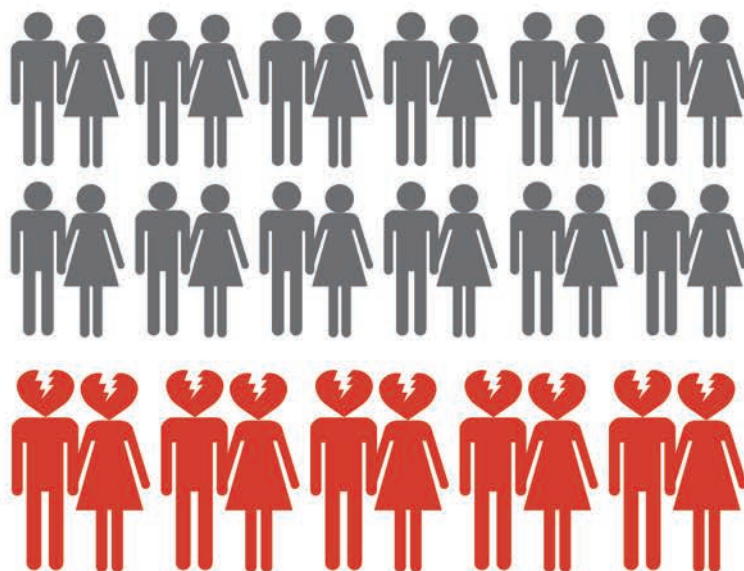




Canaanlawyers

迦南律師事務所

全澳洲每年有120,000人結婚



同時每年亦有50,000人離婚

免費首次法律諮詢讓你了解自己應有的權利

想獲得更多專業的法律資訊？

請到迦南律師事務所的  頁面
www.facebook.com/canaan.lawyers
按「讚」

或

掃描一下二維碼



黃子華棟篤笑 2015 [唔痴線唔正常]
墨爾本站官方指定法律顧問

www.canaanlawyers.com.au
Level 2, 395 Collins Street, Melbourne VIC 3000
T (03) 9620 0888 F (03) 9620 0777



林健人特許會計師

PHILEMON LAM - CHARTERED ACCOUNTANT

財務管理 稅務策略
商業報稅 會計理帳

Suite 203, Level 2, 10 Help Street,
Chatswood NSW 2067

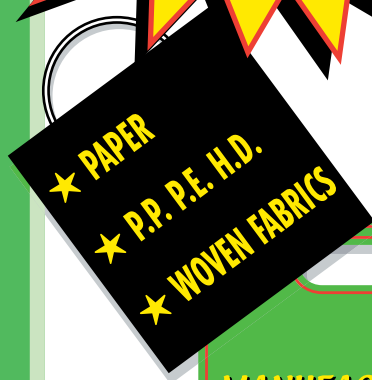
Tel: (02) 9411 7377

Email: philemonlam@optusnet.com.au

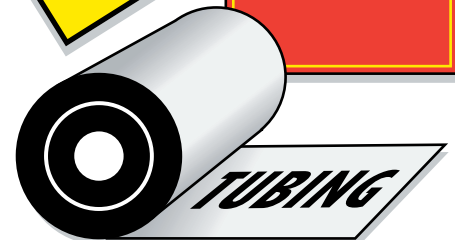
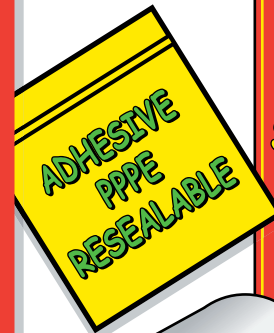
AUST & ASIA PLASTIC BAG



Recycled and Biodegradable



MANUFACTURER
&
IMPORTER



PRINTED OR PLAIN

102 - 112 May Street, ST PETERS. NSW 2044

Phone: 9550 1616

Fax: 9550 5154

Email: bags@austnasia.com.au



TASTE OF SHUNDE

順德味道

唯一在澳洲的正宗顺德菜。
Sydney's first authentic Canton
food from the UNESCO City of
Gastronomy, Shunde.

02 8385 9720

Town Square AR16

5 Belgrave Street

Kogarah 2217 NSW



熱烈祝賀
慧賢會27周年慈善餐舞會
取得圓滿成功

Congratulate on the wonderful work of
Way In Network
Wish you great success for
the 27th Anniversary Charity Ball





ed5international
dance. sing. act.

#imaned5kid

Location
North Strathfield

ed5international.com.au

ESTABLISHED
1995

School's
Out

DESIGNER KIDSWEAR



现正招生

ENROLLING NOW

节目小主持班

Program Hosting Class

少儿现代舞班

Children's Modern Dance Class

儿童模特表演班

Children's Modelling
Performance Class

幼儿模特舞蹈班

Children's Modelling
Dance Class

儿童芭蕾舞班

Children's Ballet Class

儿童民族舞蹈班

Children's Folk Dance Class

儿童美术绘画班

Children's Art Drawing Class

儿童拉丁舞班

Children's Latin Dance Class

少儿合唱班

Children's Choir

另:特色1对1课程:钢琴 | 小提琴 | 古筝 | 扬琴

根据学员适合上课时间而定

• 逢周六, 日上课



🌐 www.sydney828.com

☎ 0423 833 698 (02) 8959 3070

📍 Unit 19, Level 5, 591 George St Sydney, NSW 2000

✉ Meiwu33@126.com



LANDCROSS REAL ESTATE



Landcross was established as a diversified real estate office in 2002
新世紀地產是一間多元化的房地產公司, 創立於2002年

- Our mission is to provide & deliver Real Estate services of the highest quality & standard.
我們承諾任何時候都能提供卓越的房地產服務
- Offering a broad range of specialist advisory, management and transactional services.
為廣泛的客戶提供專業的地產諮詢, 管理和銷售交易服務
- The forward-thinking, innovative attitude of Landcross improve the consumer's experience on a more attentive level.
新世紀地產具前瞻性和創新態度, 致力於提供更高效的客戶服務

Residential & Commercial Sales/Lease

商住物業買賣/租賃

Property Management

商 住 物 業 管 理

Project Development

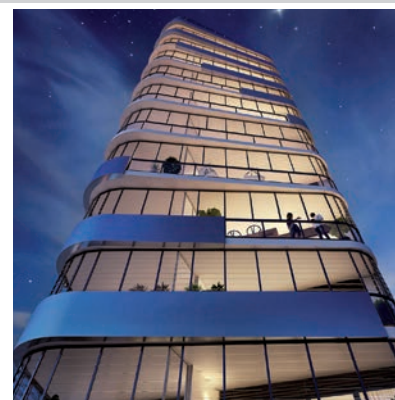
地 產 項 目 發 展

Auction

地 產 物 業 拍 賣

Appraisal

地 產 市 場 分 析



Landcross Real Estate

Address: Suite 19, 127 Forest Road Hurstville NSW 2220

Tel: 9570 1320

Email: properties@landcross.com.au
Website: www.landcross.com.au